



A Compact and Affordable Document Scanner



Features:

- Single-sided color documents up to legal size (8.5 x 14 in.)
- Scan speed up to 20 ppm in both color or mono mode
- Easy-to-use operational panel
- ADF maximum capacity of 35 pages of 20 lb. paper
- 600 dpi true optical resolution
- TWAIN driver provides auto color detection, auto crop, deskew and thresholding image-enhancing features
- LED light source requires no warm-up time
- Deliver color, grayscale, or black and white image simultaneously in one scan
- Auto power off setting
- Weight: 2.5 kgs

Overview

The Avison AD120S with an Automatic Document Feeder/ Flatbed is a compact and affordable productivity scanning solution delivering 20 pages per minute in 300 dpi resolution. The combination of high productivity through the 35-page Auto Document Feeder and affordability makes this series the obvious choice for reducing the total cost of scanning.

User-Replaceable parts

With easy-to-change and easy-to-clean parts, ongoing routine maintenance can be handled by scanner users. This reduces the need for service calls and allows you to boost scanning efficiency.

Intuitive Button Scanning

The AD120S is easy to use through the LCD display and buttons on the panel. By selecting your destination and pressing the "Scan" button, the scan can be done and the scanned image can be sent to your specified destination application such as e-mail, printer, or your favorite image-editing software application. Up to nine frequently used scan settings and destinations can be preset for different scanning needs.



Compact and earth-friendly design

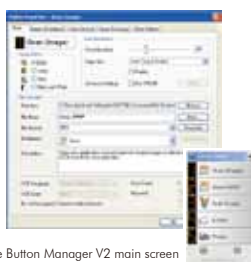
The AD120S is compact and earth-friendly in design since it uses CIS (contact image sensor) technology which requires smaller space and the LED lamp as the light source. The LED lamps are lower power consumption and are designed to last for the life of the scanner, and their bright light renders true illumination to enable accurate color imaging.

Scan to Clouds Directly via Button Manager V2

The AD120S come with TWAIN and ISIS drivers, and are bundled with a suite of powerful software applications that include Avison Button Manager, AVScan X, and PaperPort SE 14. With Button Manager V2, you can create searchable PDFs, scan and send images to e-mail, printer, or clouds servers such as Google Drive, Facebook, or Evernote® with just a simple press of a button. The AVScan X and PaperPort are highly effective image processing and document management software that helps you streamline your task more efficiently.

Avision's Button Manager V2

-Completes your scan with a single step



The Button Manager V2 main screen

Button Manager V2 makes it easy for you to scan and send your image to your favorite destinations with a press one button. Now the new version comes with an innovative feature to let you scan and automatically upload the scanned document to popular cloud repositories such as Google Docs, Microsoft SharePoint, or FTP. In addition, the iScan feature allows you to insert the scanned image or recognized text after optional OCR (Optical Character Recognition) process to your text editor such as Microsoft Word to get your job done easily and quickly.

AVScan X

-The Intelligent Document Management Tool



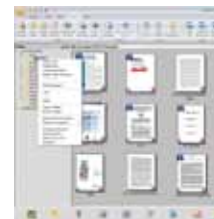
The AVScan X main screen

Document Imaging is the very first step of Document Management. However, poor quality images can cause serious problems to later indexing or storing processes. It may increase scanning labour costs and lowers the OCR accuracy. AVScan X ensures all documents are checked and polished at the time they are scanned such that the image quality is guaranteed before they are ready to use for other purposes.

AVScan X is an intelligent scanning and electronic filing solution. AVScan 5.0 possesses distinct features that convert and index scanned information into electronic documents for easy storage and fast retrieval.

Nuance PaperPort SE14

- The Professional Choice to Organize and Share Your Documents



The PaperPort SE14 main screen

PaperPort SE 14 is Nuance's most popular scanning and document management solution, carefully designed specifically for home office use. Part traditional file cabinet, part digital-document desktop, PaperPort SE 14 is the fastest and easiest way to scan, share, search, and organize your documents. Additionally, PaperPort SE 14 now delivers anytime-anywhere access to your most important files however it's convenient for you – using a PC, Mac, iPhone, iPad, or Android device.



PAPERPORT SE14



Avision
Button Manager V2

AVScan X



Avision AD120S Product Specifications

Paper Feeding:	ADF 35-page capacity with flatbed	
Scanning Technology:	Contact Image Sensor (CIS)	
Light Source:	LED	
Document size (ADF):	Max.	216 x 356 mm (8.5 x 14 in.)
	Min.	76.2 x 127 mm (3.0 x 5.0 in.)
Document Size (Flatbed):	Max.	216 x 297 mm (8.5 x 11.7 in.)
	Min.	76.2 x 127 mm (3.0 x 5.0 in.)
Scanning Speed:	20 PPM (Color, A4, 300 dpi)	
Paper Thickness:	60~105 g/m ² (16~28 lb.)	
Optical Resolution:	600 dpi	
Output Resolution:	75, 100, 150, 200, 300, 400 and 600 dpi	
Output Formats:	B/W, greyscale, 24-bit color	
File Formats:	BMP, PNG, GIF, JPEG, Single-Page PDF, Multi-Page PDF, Multi-TIFF, TIFF, RTF, TXT, OCR (for iScan only), XPS, DOC, XLS, PPT, DOCS, XLSX, PPTX, HTML.	
Bundled Software:	Avision Button Manager V2, Avision AVScan X, PaperPort SE 14	
Interface/Drivers:	USB 2.0 (USB 3.0 Compatible) / TWAIN , ISIS	
Power Supply:	Input: 100~240 VAC, 50/60 Hz Output: 24V, 1.5A	
Power Consumption:	Operating:	< 10 W
	Ready:	<5 W
	Sleep:	<2.9
	Off:	<0.23 W
Environmental Factors:	Operating temperature: 10°C to 35°C (50°F to 95°F)	
	Operating humidity: 10% to 85%	
Dimensions	402 x 330 x 112 mm	
(H x W x D):	(15.6 x 13 x 4.4 in)	
Weight:	2.7 kg (5.9 lb.)	
Recommended Daily	Up to 500 Sheets	
Scanning Volume:		

Windows, Windows XP, Windows Vista, Windows 7 and Windows 8 are either registered trademarks or trademarks of Microsoft Corporation in the United States and/or other countries. PaperPort is a registered trademark of Nuance Communications, Inc. or its affiliates in the United States and/or other countries. Other brands and product names herein are trademarks or registered trademarks of their respective holders.

System Requirements

CPU:	Intel® Core 2 Duo or higher
Memory:	1GB (32bit Windows) 2GB (64bit Windows)
DVD-ROM:	DVD ROM Drive
USB:	USB2.0 Port (USB 1.1 supported)
Windows® Operating System:	Windows® XP SP3, Vista, 7, 8.x, 10

Contents

AD120S Scanner
Power Supply
Quick Guide
USB 2.0 Cable
CD-ROM includes:
-Scanner Driver
(TWAIN/ ISIS/ WIA Driver)
-Avision Manager V2
-Avision AVScan X
-Nuance PaperPort SE 14



Avision
www.avision.com