



A Fast, and Affordable Scanner

600

DPI

A4

Duplex
scanning

Up to

50

pages

30 60
ppm ipm
scanning speed

30 60
ppm ipm
scanning speed

1
Ultrasonic
sensor

120"
Long
page

Features:

- Scan documents up to legal size (8.5" x 14"), ADF mode
- Scan speed up to 30 ppm/ 60 ipm in both color or mono mode
- Easy-to-use operational panel
- ADF maximum capacity of 50 pages of 80 g/m² paper
- 600 dpi true optical resolution
- TWAIN driver provides auto color detection, auto crop, skew and thresholding image-enhancing features
- Ultrasonic multi-feed detection provides efficient multi-page scanning uninterruptedly
- Long page scanning up to 3048 mm (120 in.)
- LED light source requires no warm-up time
- Deliver color, grayscale, and monochrome image simultaneously in one scan
- Weight: 4.3 kg

Overview

Combining a flatbed scanner with the convenience of a 50-page ADF, the AD130 is a compact and affordable productivity scanning solution delivering 30 pages per minute and 60 images per minute at 300 dpi. The combination of high productivity and affordability makes this series the obvious choice for reducing the total cost of scanning.

Easy-to-use button scanning

The AD130 is easy to use through the LCD display and buttons on the panel. By selecting your destination and pressing the "Scan" button, you can scan document to searchable PDF, JPEG, BMP, or GIF file format, and send the scanned image to a preprogrammed destination such as e-mail, printer, image editing software application, or even a cloud server such as Google Drive, Dropbox, Evernote, or Microsoft SharePoint. Scanning is simply that easy!

Compact and earth-friendly design

The AD130 is compact and earth-friendly in design since it uses CIS (contact image sensor) technology which requires smaller space and the LED lamp as the light source. The LED lamps are lower power consumption and are designed to last for the life of the scanner, and their bright light renders true illumination to enable accurate color imaging.

Automatic multiple images cropping

In addition, the scanner comes with the convenient feature of multiple images cropping.

With this feature, various sizes of documents such as photos, ID Cards, or business cards can be placed on the flatbed and the scanner is able to crop and create multiple images according to the original sizes of the documents in one single scan.

Advanced settings via TWAIN driver

For advanced users who wish to control scan settings and obtain the best image quality, the Avison's AD130 is able to scan through Avison's advanced TWAIN user interface from TWAIN-compliant software application. Avison's TWAIN user interface provides various useful features to enhance your image quality including auto crop and skew, auto color detection, color matching, color dropout and so on.

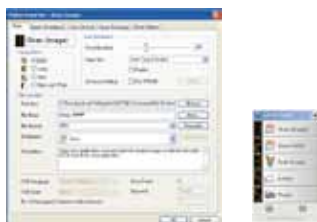
Powerful bundled software applications

The Avison AD130 comes with TWAIN and ISIS drivers, and is bundled with a suite of powerful software applications that include Avison Button Manager, AvScan X, and Nuance PaperPort 14. With Button Manager, you can scan to searchable PDF, JPEG, BMP, or GIF file format, send the scanned image to a specified destination such as e-mail, printer, or other application with a press of a button. The AvScan X and Nuance PaperPort are highly effective image processing and document management software that helps you streamline your task more efficiently.

Avision | AD130 Document Scanner

Avision's Button Manager V2

-Completes your scan with a single step



The Button Manager V2 main screen

Button Manager V2 makes it easy for you to scan and send your image to your favorite destinations with a press one button. Now the new version comes with an innovative feature to let you scan and automatically upload the scanned document to popular cloud repositories such as Google Docs, Microsoft SharePoint, or FTP. In addition, the iScan feature allows you to insert the scanned image or recognized text after optional OCR (Optical Character Recognition) process to your text editor such as Microsoft Word to get your job done easily and quickly.

AVScan X

-The Intelligent Document Management Tool



The AVScan X main screen

Document Imaging is the very first step of Document Management. However, poor quality images can cause serious problems to later indexing or storing processes. It may increase scanning labor costs and lowers the OCR accuracy. AVScan X ensures all documents are checked and polished at the time they are scanned such that the image quality is guaranteed before they are ready to use for other purposes.

AVScan X is an intelligent scanning and electronic filing solution. AVScan X possesses distinct features that convert and index scanned information into electronic documents for easy storage and fast retrieval.

PaperPort SE14

- The Professional Choice to Organize and Share Your Documents



The PaperPort SE14 main screen

PaperPort SE 14 is Nuance's most popular scanning and document management solution, carefully designed specifically for home office use. Part traditional file cabinet, part digital-document desktop, PaperPort SE 14 is the fastest and easiest way to scan, share, search and organize your documents. Additionally, PaperPort SE 14 now delivers anytime-anywhere access to your most important files however it's convenient for you – using a PC, Mac, iPhone, iPad, or Android device.



PAPERPORT SE 14



Avision

Button Manager V2

AVScan X



Avision AD130 Product Specifications

Paper Feeding:	ADF 50-page capacity with flatbed
Scanning Technology:	CIS
Light Source:	LED
Long Page Mode:	3048 mm (120 in.)
Document size (ADF):	Min. 90 x 90 mm (3.5 x 3.5 in.) Max. 216 x 356 mm (8.5 x 14 in.)
Document Size (Flatbed):	Max. 216 x 297 mm (8.5 x 11.7 in.)
ADF Scanning Speed:	30 PPM/60 IPM (color, A4, 300 dpi)
Flatbed Scanning Speed:	4 sec.(color, A4, 300 dpi)
Paper Thickness:	49~127 g/m ² (13~34 lb.)
Optical Resolution:	600 dpi
Output Resolution:	75, 100, 150, 200, 300, 400 and 600 dpi
Output Formats:	B/W, greyscale, 24-bit color
File Formats:	BMP, PNG, GIF, JPEG, PDF, Searchable PDF Multi-Page TIFF, TIFF, RTF, TXT, XPS, DOC, XLS, PPT, DOCX, XLSX, PPTX, HTML.
Bundled Software:	Avision Button Manager V2, Avision AVScan X Nuance PaperPort SE 14
Interface/Drivers:	USB 2.0 / TWAIN , ISIS
Power Supply:	Input: 100~240 VAC, 50/60 Hz Output: 24V, 1A
Power Consumption:	Operating: 16 W Ready: 7 W Sleep: 2.9 W Off: 0.5 W
Environmental Factors:	Operating temperature: 10°C to 35°C (50°F to 95°F) Operating humidity: 10% to 85%
Acoustic Noise:	Standby: <58 dB Operating: <40 dB
Dimensions	Max. : 453 x 324 x 237 mm
(W x D x H):	17.8 x 12.8 x 9.3 in.
Weight:	4.3 kg (9.5 lb.)
Recommended Daily Scanning Volume:	Up to 3,000 sheets
Multi-feed Detection:	Ultrasonic Sensor

We have endeavored to ensure that the information in this manual is accurate and that Avision is not responsible for printing or typographical errors. The above configuration is for reference only. Avision Inc. owns the intellectual property rights of the product outlook and design and the product outlook and design are subject to change. Avision reserves the right to the interpretation of the product description. Avision, Inc. All rights reserved. Other company and product names mentioned in this document are trademarks of their respective companies. Wherein the third party product is for reference only and Avision does not warrant these products nor is responsible for the efficiency or use of these products.

System Requirements

CPU:	Intel® Core i3 (2.1GHz) or Higher
Memory:	1GB (32bit Windows) 2GB (64bit Windows)
DVD-ROM:	DVD ROM Drive
USB:	USB2.0 Port (USB 3.0 compatible)
Windows® Operating System:	Windows® 10, 8.x, 7, Vista, SP3, XP (32 & 64 bit)

Contents

AD130 Scanner
Power Supply
Quick Guide
USB 2.0 Cable
CD-ROM includes:
-Scanner Driver
(TWAIN/ ISIS Driver)
-Avision Button Manager V2
-Avision AVScan X
-Nuance PaperPort SE 14



Avision
www.avision.com