

### New Generation of High-Speed Scanning Solution



Dust Cover Design



Scan to cloud servers

Fast,  
**60 ppm**  
scanning speed

**600**  
DPI

**A4**

**Simplex**  
scanning

Up to  
**80**  
pages

**60 ppm**  
scanning speed

**1**  
Ultrasonic sensor

**118"**  
Long page

### Features:

- Fast, 60 ppm scanning in color, grayscale and monochrome (200 dpi, color)
- Max. document width up to 242 mm
- Daily duty cycle up to 6,000 sheets
- Robust 80-page automatic document feeder
- Auto crop and deskew a document with the advanced image processing unit to enhance the scanning speed
- Reverse roller technology delivers outstanding feeding reliability
- Paper Protection Technology
- Hard and embossed card scanning up to 1.25 mm in thickness
- Press and scan to cloud servers via the bundled software Button Manager V2
- Earth-friendly LED technology
- Long page scanning: 3000 mm
- Auto power off setting

### Overview

The AD240S is a 60 page-per-minute, simplex scanner that is fast, reliable and affordable for business where scanning plastic ID cards, business cards, documents or other heavy card stock is necessary. Combining reverse roller and advanced paper feeding technologies, the AD240S balances fast speed with exceptional reliability across a wide variety of scanning situations.

### Support form paper up to 242 x 356 mm (9.5 x 14 in.)

The AD240S boasts a unique and innovative design in comparison with its predecessors - the ability to accommodate form document up to 242 x 356 mm (9.5 x 14 in.). The extended document width from standard 216 mm (8.5 in.) to 242 mm (9.5 in.) makes the AD240S more competitive to fit for a wider range of documents.

### A Simplex Scanner Suited for Document and Cards

Thanks to the advanced straight paper path and image processing technology, mixed batches of documents with varies sizes and weights can be scanned, appropriately cropped, deskewed, and ready to use. Scan size accepts paper from receipts (50 x 50 mm/ 2 x 2 in.) to business document (242 x 256 mm/ 9.5 x 14 in.). The auto document feeder is also robust enough to feed paper up to 413 g/m<sup>2</sup> (110 lb.) and embossed hard cards such as ID cards, credit cards, driver's license and health insurance card up to 1.25 mm in thickness.

### Paper Protection Technology

The advanced Paper protection technology protects valuable paper from being wrinkled or torn

by halting the scan process once a skewed page is detected.

### Powerful Bundled Software Applications

The AD240S come with TWAIN and ISIS drivers, and are bundled with a suite of powerful software applications that include Avison Button Manager, AVScan X and Nuance PaperPort SE 14.

### Avison's Button Manager V2

-Completes your scan with a single step



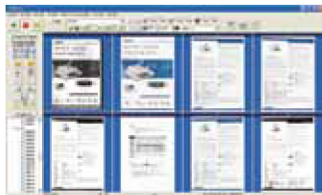
The Button Manager V2 main screen

Button Manager V2 makes it easy for you to scan and send your image to your favorite destinations with a press one button. Now the new version comes with an innovative feature to let you scan and automatically upload the scanned document to popular cloud repositories such as Google Docs, Microsoft SharePoint, or FTP. In addition, the iScan feature allows you to insert the scanned image or recognized text after optional OCR (Optical Character Recognition) process to your text editor such as Microsoft Word to get your job done easily and quickly.

# Avision | AD240S Sheetfed Scanner

## AVScan X

-The Intelligent Document Management Tool



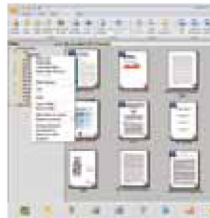
The AVScan X main screen

Document Imaging is the very first step of Document Management. However, poor quality images can cause serious problems to later indexing or storing processes. It may increase scanning labor costs and lowers the OCR accuracy. AVScan X ensures all documents are checked and polished at the time they are scanned such that the image quality is guaranteed before they are ready to use for other purposes.

AVScan X is an intelligent scanning and electronic filing solution. AVScan X possesses distinct features that convert and index scanned information into electronic documents for easy storage and fast retrieval.

## Nuance PaperPort SE14

- The Professional Choice to Organize and Share Your Documents



The PaperPort SE14 main screen

PaperPort SE 14 is Nuance's most popular scanning and document management solution, carefully designed specifically for home office use. Part traditional file cabinet, part digital-document desktop, PaperPort SE 14 is the fastest and easiest way to scan, share, search and organize your documents. Additionally, PaperPort SE 14 now delivers anytime-anywhere access to your most important files however it's convenient for you – using a PC, Mac, iPhone, iPad, or Android device.

## Avision Network Box Scan APP



Avision Network Box APP main screen

By connecting the scanner to Avision's newly designed Network Box, the scanner can be upgraded into a wired or wireless scanner to let other computers or smartphones/ tablets to scan and receive image data directly from the scanner in the LAN.

### Avision Network Box Application

To let your mobile devices instruct to scan and receive the scanned image, you need to install the mobile app – Avision Network Box to your smart phones or tablets. The Avision Network Box application can be purchased for free from an application store such as Google Play, Apple APP store.

Simply press the [Start scan] button, the scanner begins scanning the document and the thumbnail image will be displayed.



### Avision AD240S Product Specifications

Paper Feeding:	ADF 80-page capacity
Scanning Technology:	Color Charged-Coupled Device ( CCD )
ID card thickness:	Up to 1.25 mm
Scanning Size:	Min. 50 x 50 mm ( 2 x 2 in.) Max. 216 x 356 mm ( 8.5 x 14 in.)
Scanning Speed:	60 PPM (Color, A4, 200 dpi) 40 PPM (Color, A4, 300 dpi)
Paper Thickness:	27~413 g/m <sup>2</sup> (7~110 lb.)
Long Page Mode:	3000 mm (118 in.)
Optical Resolution:	600 dpi
Output Resolution:	75, 100, 150, 200, 300, 400 and 600 dpi
Output Formats:	B/W, greyscale, 24-bit color
Bundled Software:	Avision Button Manager V2 Avision AVScan X Nuance PaperPort SE 14
Interface/Drivers	USB 2.0 / TWAIN , ISIS
Power Supply:	Input: 100-240 VAC, 50/60 Hz Output: 24V, 2.0A
Power Consumption:	Active: 24 W Ready: 7.5 W Sleep: 2.5 W Off: 0.32 W
Environmental Factors:	Operating temperature: 10°C to 35°C (50°F to 95°F) Operating humidity: 10% to 85%
Acoustic Noise:	Operating: <55 dB Standby: <45 dB
Dimensions	Max.: 316 x 680 x 239 mm ( 12.4 x 26.8 x 9.4 in.) Min.: 316 x 191 x 168 mm ( 12.4 x 7.5 x 6.6 in.)
Weight:	4.2 kg ( 9.2 lb.)
Recommended Daily Duty Cycle:	6,000 sheets
Multi-feed Detection:	Ultrasonic

Specifications subject to change without notice.

### System Requirements

CPU:	Intel® Core 2 Duo or higher
Memory:	2GB (32bit Windows) 4GB (64bit Windows)
DVD-ROM:	DVD ROM Drive
USB:	USB2.0 Port (USB 1.1 supported)
Windows® Operating System:	Windows® XP SP3, Vista, 7, 8.x, 10 (32 & 64 bit)

### Contents

AD240S Scanner
Power Supply
Quick Guide
USB 2.0 Cable
CD-ROM includes:
-Scanner Driver (TWAIN/ISIS Driver)
-Avision Button Manager V2
-Avision AVScan X
-Nuance PaperPort SE 14

Windows, Windows XP, Windows Vista, Windows 7 and Windows 8 are either registered trademarks or trademarks of Microsoft Corporation in the United States and/or other countries.  
Nuance, PaperPort, and PaperPort SE are either registered trademarks or trademarks of Nuance Communications, Inc. or its affiliates in the United States and/or other countries.  
Other brands and product names herein are trademarks or registered trademarks of their respective holders.

**Avision**  
www.avision.com



**Avision**  
www.avision.com

No. 20, Creation Rd. I  
Hsinchu Science Park 30077, Taiwan  
Tel: 886-3-5782388 Fax: 886-3-5777017

סאן אלקטרוניקס בע"מ, בית ספר, תל גיבורים 5 תל-אביב 68105  
טל 03-5187722, פקס 03-5187733, www.sun.co.il

